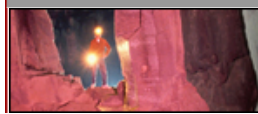


[HOME](#)[ABOUT US](#)[ADVERTISE](#)[PREMIUM](#)[SUBSCRIBE](#)[SITE MAP](#)[HELP](#)[CONTACT](#)[WORK FOR US](#)

Turn Mineral Analysis into Profit

with Automated Mineral
Identification & Quantification



Tuesday
2 October 2007

[Make MNN my HomePage](#)



Echo results have golden ring

Friday, 28 September 2007

ECHO Resources has recorded wide intercepts of shallow gold mineralisation from drilling the Julius deposit at its Yandal project in Western Australia's Goldfields region.

Better assays from the drilling program were 12m at 5.3 grams per tonne gold including 8m at 6.5gpt, 6m at 5.1gpt including 3m at 6.9gpt, and 12m at 2gpt including 4m at 3.9gpt.

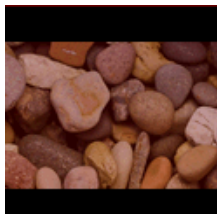
Echo managing director Ernst Kohler said the latest results highlight the economic potential of the Julius deposit, although further exploration needs to be carried out.

"The bulk of the recently intersected gold mineralisation is shallow, extending from about 10 metres below surface to just over 100 metres, and may be amenable to extraction by opencut mining," he said.

The next stage of work at Julius will involve the completion of a mineral resource estimate, preliminary metallurgical testing and further drilling.

Shares in Echo were up 1c in early afternoon trade to 23.5c.

[Click here to read the rest of today's news stories.](#)



RELATED LINKS

[COMPANY]

- ECHO RESOURCES LTD
[EAR]

[SECTION]

- General

[REGION]

- Australia

[COMMODITY]

- Gold News

[RELATED STORY]

- Results fuel Echo's gold hunt

[OTHER]

- Printable Version

- Send to a Friend

STORY SEARCH

Type Text Here

Section

Commodity

Region

Feature

[Advanced Search](#)

COMPANY SEARCH

Company Name

[Search Help](#)

UPCOMING EVENTS

Excellence in Mining and
Exploration 2007

Broken Hill Mining &
Exploration Conference

Australian Institute of
Project Management
Conference 2007

2007 AIPM Conference

Tunnelling 2007
Conference